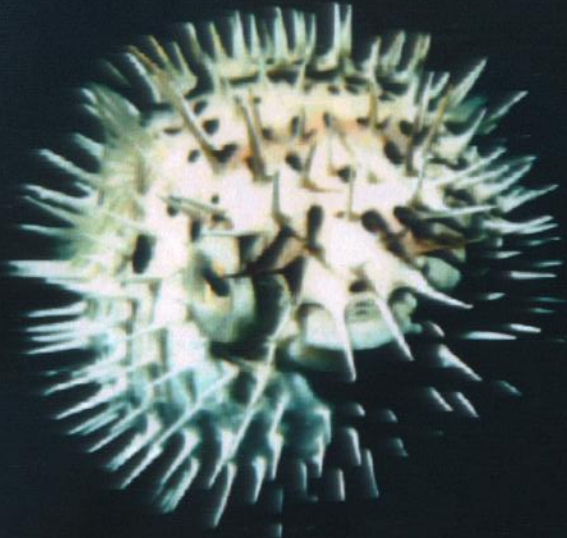


Contact Information:



Seahorse Key Marine Laboratory
Director: Dr. H.B. Lillywhite
University of Florida
P.O. Box 118525
Gainesville, FL 32611-8525

E-mail: hbl@zoo.ufl.edu
Phone: (352) 392-1101
Fax: (352) 392-3704
URL: www.zoo.ufl.edu/shkml

You can help us.
Please contact the director for information on current projects needing financial or material assistance.

Photo credits: B. Colin, J. Fajans, & H.B. Lillywhite



UNIVERSITY OF
FLORIDA

Seahorse Key Marine Laboratory
P.O. Box 118525
Gainesville, FL 32611-8525

Seahorse Key Marine Laboratory



- Research
- Teaching
- Public Education

The **Seahorse Key Marine Laboratory** (SHKML) is operated by the University of Florida and is located within the Cedar Keys National Wildlife Refuge. It is open year-round for scheduled uses related to research and education.

Mission Statement:

The SHKML is a field station committed to providing:

- Support for research by students, faculty, and visiting scientists
- An outstanding teaching program in coastal and marine related subjects
- Support for public education related to marine, estuarine and coastal biotic resources

Programs in Research and Education:

- Research activities using SHKML facilities include undergraduate projects, masters, doctoral theses, and research conducted by faculty and visiting scientists.
- Current research includes projects in ecology, physiology, behavior, population biology, evolutionary biology, taxonomy, natural history, reproduction and development of marine estuarine and terrestrial organisms.
- More than 20 courses offered at the University of Florida utilize SHKML facilities.
- A Summer Marine Biology course includes field and laboratory work while students reside at Seahorse Key (web site: <http://www.zoo.ufl.edu/Courses/zoo4403c/index.html>).

Facilities:

Laboratory:

- A small air-conditioned building includes work bench space, holding tanks with air and seawater delivery, lecture screen, microscopes, bathroom and catalogued teaching collection of regional marine biota.

Residency:

- A historic lighthouse dating from the 1850s provides overnight accommodation for a maximum of 26 persons. Features include kitchen facilities with refrigerators, bunk-style beds, tables, ice machine, drinking water, and bathrooms with showers. Outdoor tables and volleyball court are nearby.